

Laboratory Approved Specimen Collection Devices & Media

For Corewell Health Lakeland Hospitals Laboratories:
St. Joseph, Niles, Watervliet

Photos are for reference. Always check the container label to verify; do not go by color alone.
General test listing: not all tests are listed. Please review the test catalog for more information.**

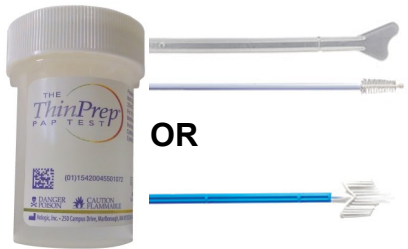


**Alinity m
multi-Collect Kit**
ITM-1190747

LAB1230885 Chlamydia, Gonococcus PCR
LAB1231782 Chlamydia, Gonococcus,
Trichomonas PCR
LAB1230890 STI Panel PCR** (CT, NG, TV, MG)

LAB1230886 Chlamydia PCR (CT)
LAB1230887 Gonococcus PCR (NG)
LAB1230889 Mycoplasma genitalium PCR (MG)
LAB1230888 Trichomonas PCR (TV)

- ✓ **Sources for CT, NG, TV, or MG:** Endocervical swabs, urine, male urethral swabs, or vaginal swabs (clinician-collected or clinical self-collect).
- ✓ **Other sources for CT, NG, or TV:** Gynecological specimens in ThinPrep® PreservCyt solution.
- ✓ **Other sources for CT or NG:** Oropharyngeal swabs or rectal swabs.
- ✓ Specimens collected on pediatric patients ages 13 years or younger will be sent to a reference laboratory for testing.**



**ThinPrep® Pap
Container**
Not available via
Workday.
Order via
Client Services.

LAB1230097 Pap Test** (Indicate HPV Reflex**)
LAB1231770 HPV High Risk Screen with
HPV Genotype Reflex
LAB1231782 Chlamydia, Gonococcus,
Trichomonas PCR*

LAB1230885 Chlamydia, Gonococcus PCR*
LAB1230886 Chlamydia PCR*
LAB1230887 Gonococcus PCR*
LAB1230888 Trichomonas PCR*

- ✓ Aseptic Control PAP Test Lubricating Jelly (ITM-1140484) and Surgilube® (ITM-1092842) are the only lubricating jellies to be used with ThinPrep®
- ✓ *Testing cannot be added onto a previous completed Pap Test Order. Note STI Panel and Mgen are not available for ThinPrep® Collection



**BD ESwab®
Regular Swab**
ITM-1148589 (white)
Minitip Swab
ITM-1066011 (blue)

LAB233 Anaerobic Culture
LAB240 Fungal Culture
LAB1231719 Fungal Stain
LAB235 Gonorrhea culture
LAB1231050 Group A Streptococcus PCR
LAB3417 Group B Strep, PCR

LAB3527 Group B Strep, Penicillin
Allergy, PCR
LAB1231076 MRSA Screen PCR
LAB1231036 Respiratory Culture
LAB3691 Trichomonas Antigen (female)
LAB211191 Wound Culture w/Gram stain



**UTM®
Regular Swab**
ITM-1186125
Minitip Swab
ITM-1140078

LAB9520 Bordetella pertussis, PCR
LAB1230607 COVID-19 PCR (Batch)
LAB1231077 SARS-CoV-2, Flu A/B PCR
LAB1230746 COVID-19, Flu A&B, RSV PCR

LAB1231142 Flu A/B & RSV PCR
LAB9170 HSV PCR for Lesions
LAB9440 Mycoplasma/Ureaplasma Culture
LAB1230844 VZV PCR



OSOM® BVBlue®
Order via Lab
Client Services

LAB1231044 Vaginosis Screen



Urine**
Tiger top UA Preservative Tube ITM-1118837
Gray Urine C&S Kit ITM-1065947
Yellow UA Urine Tube ITM-1065946
Orange 24-Hour Urine Jug ITM-1066912



Sterile Containers**
ITM-1072848
❖ Body Fluid ❖ Sputum
❖ Stool (unpreserved)
❖ Fresh Tissue ❖ Urine



Stool Kit **
ITM-1114530
Cary-Blair & SAF | Fill both containers.
Always check container label to verify, do not
go by color alone!



Occult Blood CRC Testing Vial**

Polymedco FIT Kit
OC-Light® S FIT - Order via Client Services

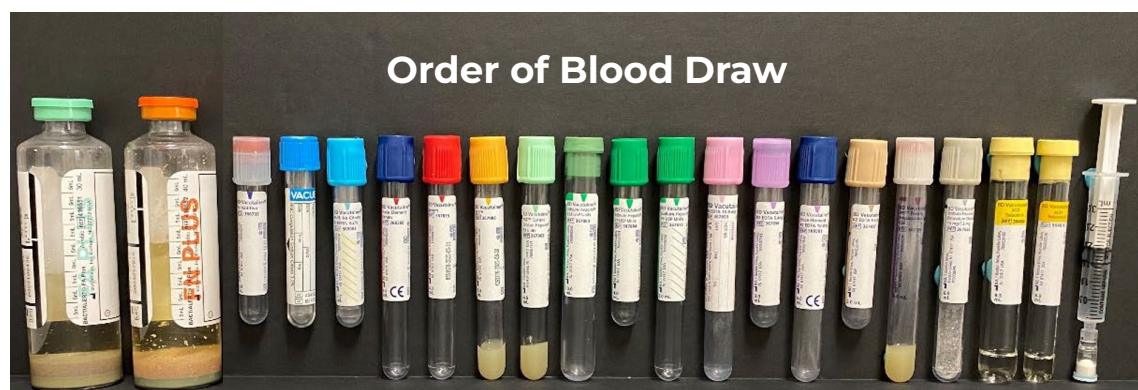
Label must be filled out completely with
patient name, date of birth and collection date
of and time before mailing.



Self Collect HPV vaginal swab**

Rovers® Evalyn® Brush ITM-1303902
LAB1231853

Must be collected in a healthcare setting (i.e.
physician office or health clinic). A trained
healthcare staff member must immediately
suspend the brush into a ThinPrep vial. **See
[lab catalog for more information.](#)



Order of Blood Draw

- ✓ Always review the lab test catalog** for important test collection information, including minimum volume, number of times the tube needs to be inverted after collection, if tube needs to be centrifuged/spun or left whole blood, specimen integrity times, and another collection and handling instructions.

Labeling



- ✓ **Every specimen must be labeled with patient's legal full name and date of birth.**
- ✓ Label should also include specimen type, date and time of collection, and source if needed.
- ✓ Do not place labels on the lid or bottom of the container, or stick labels to each other.
- ✓ Do not cover up patient info or barcodes on the labels.
- ✓ Do not cover up "windows" on tubes, leave colored edge of vacutainer visible.
- ✓ See lab catalog for more information on labeling.**

- ✓ Always use **2 patient identifiers on the specimen label** and **3 identifiers on the order.** (Full legal name and date of birth are required)
- ✓ Always make sure that lids to containers, tubes and vials are on correctly and tight! Leaky specimens will be rejected.

GENERAL TEST LISTING: NOT ALL TESTS ARE LISTED**

****Review Lab Test Catalog: corewellhealth.testcatalog.org**

Order Fax Numbers: Radiology (PASC Orders Fax) 269-932-9332 | Respiratory Orders Team 269-556-2850 | Lab Orders Team 616-774-7696