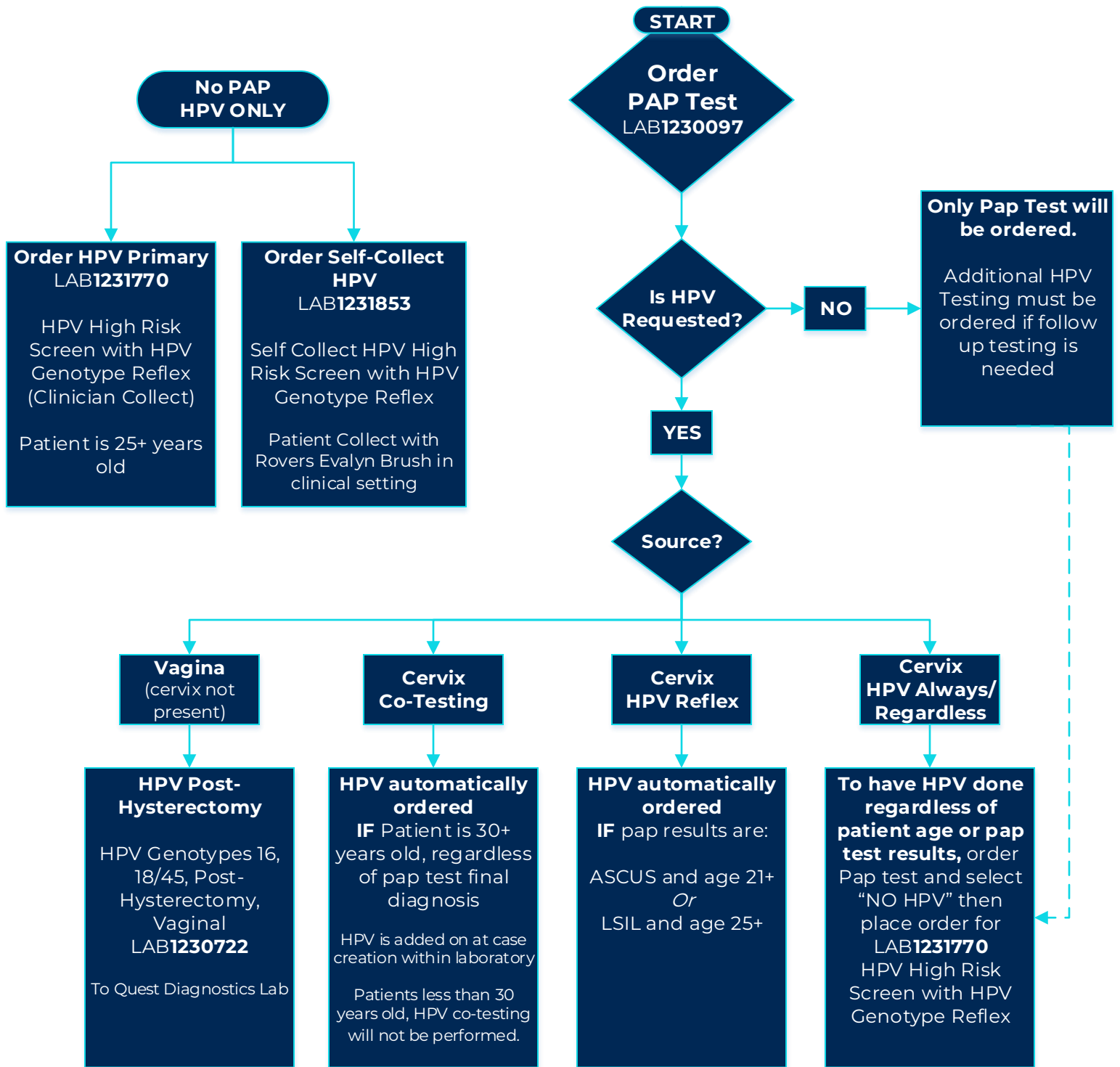


PAP and HPV Reflex/Testing Options

Corewell Health Laboratory



Additional Testing

| | |
|------------|--|
| LAB1230885 | Chlamydia/Gonococcus PCR |
| LAB1231782 | Chlamydia/Gonococcus/ Trichomonas PCR |
| LAB1230886 | Chlamydia PCR |
| LAB1230887 | Gonococcus PCR |
| LAB1230888 | Trichomonas PCR |

Note: Cannot be added onto a previous completed Pap Test Order.

Reminders

- ✓ Do not leave collection brush in container.
- ✓ Aseptic Control PAP Test Lubricating Jelly (ITM-1140484) and Surgilube (ITM-1092842) are the only lubricating jellies to be used with ThinPrep
- ✓ Specimen Source is on the container and in the order.
- ✓ Patient Legal Name and Date of Birth are on the vial.
- ✓ Lids to containers are on correctly and tight.
- ✓ Check the lab catalog: corewellhealth.testcatalog.org