

### Self collection instructions for Rovers® Evalyn® Brush

The Evalyn® Brush is to be used for the collection of vaginal specimens for use with the **cobas®** HPV or **cobas®** HPV Tests. Users should read and carefully follow these instructions. If you have any questions or difficulties with the collection process described below, please ask your healthcare provider for more information.

Should unexpected events not described in these instructions occur during self-collection, inform your healthcare provider.

#### WARNINGS:

- Inform your healthcare provider if you have used any substances such as vaginal creams, gels, lubricants, etc. within 24 hours prior to collection.
- The brush should not touch any other surface prior to inserting into vagina.

#### DO NOT USE:

- During pregnancy or within three months after giving birth
- If you have recently undergone gynecological surgery
- In case of unusual bleeding or pelvic pain



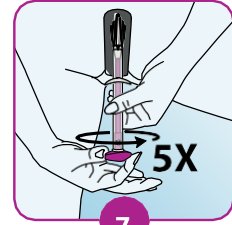
1

Wash your hands before usage.



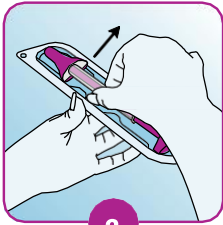
4

Obtain the sample whilst in a standing position. Assume a comfortable stance (e.g. as if you were about to insert a tampon).



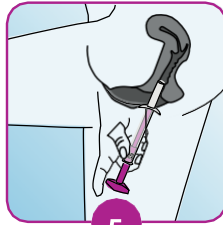
7

Turn the pink plunger five rotations in the same direction. After each rotation, you will hear a click. This helps you count the rotations. After turning the plunger five times, carefully remove the Evalyn Brush.



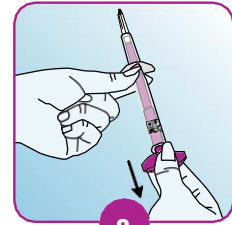
2

Remove the Evalyn Brush from the packaging. Do not throw the packaging away, as it is necessary for sending the Evalyn Brush to the laboratory after usage.



5

Spread your labia with one hand, and with the other, insert the Evalyn Brush into your vagina until the wings touch your labia.



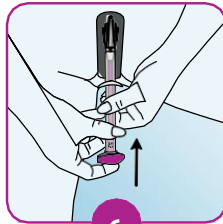
8

Hold the transparent casing with one hand, and with your other hand, pull on the pink plunger until the white brush disappears into the casing. When doing so, do not touch the top part of the Evalyn Brush above the wings.



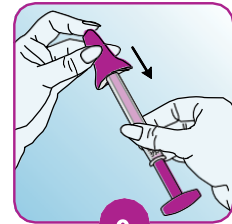
3

Press the sides of the pink cap with your thumb and index finger to remove the pink cap from the Evalyn Brush. Ensure that you do not touch the white brush of the Evalyn Brush with your hands!



6

Hold the transparent casing with one hand, and with your other hand, push the pink plunger in the direction of the transparent casing. You will hear and feel a click when the brush is in the right position with the pink plunger directly against the casing.



9

Hold the transparent end to ensure the white brush does not extend again. Place the pink cap back on the Evalyn Brush using your thumb and index finger.

You will hear a click when it is properly in place.



10

Put the Evalyn Brush back inside the packaging. After collection, hand over the swab for processing.