

## Dried Blood Filter Paper Testing: Spot Check



### Valid Specimen

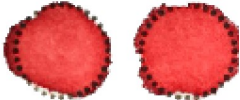
- ✓ 100 µl of blood has been collected in each circle.
- ✓ Each circle is saturated and filled completely.
- ✓ Card is allowed to dry for 2 hours before packaging.
- ✓ Collection card has been labeled with patient's full legal name (required), date of birth (required), and MRN or 3rd identifier.

### Invalid Specimens



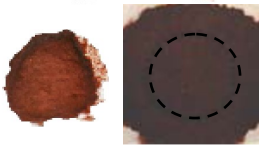
#### Quantity insufficient:

- Circles are not completely filled or blood did not soak through.



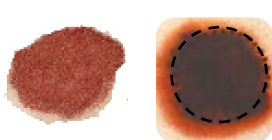
#### Not dry before packaging:

- Specimen not dried for a minimum of two hours prior to packaging.



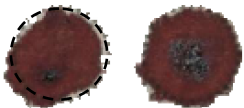
#### Supersaturated:

- Excess blood applied (usually by capillary or needle)
- Blood applied to both sides of card.



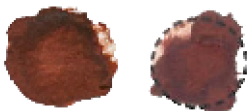
#### Serum rings:

- Alcohol not wiped off puncture site before skin puncture
- Filter paper contaminated with alcohol, water or lotion
- Puncture site excessively squeezed
- Improperly dried
- Blood applied with capillary tube containing an anticoagulant



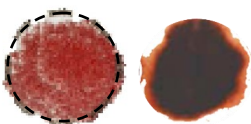
#### Clotted or layered:

- Excess blood applied (usually by capillary or needle) several times
- Blood applied to both sides of card



#### Scratched or abraded:

- Blood applied with capillary tube.



#### Diluted, discolored or contaminated:

- Puncture site squeezed or "milked" to expel blood
- Exposure to direct heat
- Filter paper contamination with powder, water, alcohol or lotion.