

Laboratory Approved Specimen Collection Devices & Media

For Corewell Health Reference Laboratory West and the following West Michigan laboratories:

Corewell Health Advanced Technology Laboratory | Corewell Health Big Rapids Hospital | Corewell Health Blodgett Hospital | Corewell Health Butterworth Hospital
Corewell Health Gerber Hospital | Corewell Health Greenville Hospital | Corewell Health Ludington Hospital | Corewell Health Pennock Hospital
Corewell Health Reed City Hospital | Corewell Health Zeeland Hospital

Photos are for reference only. Always check container label, do not go by color alone!
General Test Listing. Not all tests are listed. Please review test catalog for more information.**

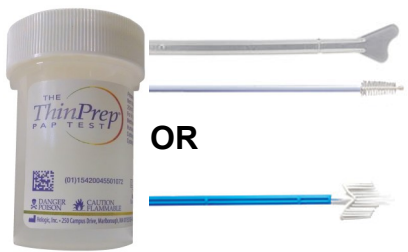


**Alinity m
multi-Collect Kit**
ITM-1190747

LAB1230885 Chlamydia+Gonococcus PCR
LAB1230890 STI Panel PCR*** (CT, NG, TV, MG)
LAB1230886 Chlamydia PCR (CT)
LAB1230887 Gonococcus PCR (NG)

LAB1230889 Mycoplasma Genitalium PCR (MG)
LAB1230888 Trichomonas PCR (TV)

- ✓ **Sources for CT, NG, TV:** vaginal swabs (clinician-collected and self-collected in a clinical setting), endocervical swabs, gynecological specimens in ThinPrep PreservCyt Solution, female urine, male urine and urethral swabs, oropharyngeal swabs, and rectal swabs on patients 14 years or older. Patients less than 14 years old must be collected using the APTIMA collection device. This testing will be sent out to a reference laboratory.
- ✓ **Sources for MG:** vaginal swabs (clinician-collected and self-collected in a clinical setting), endocervical swabs, male urine and urethral swabs on patients 14 years or older.



ThinPrep® Pap Container
Not available via Workday.
Order via Lab Supply Form

LAB1230097 Pap Test** (Indicate HPV Reflex**)
LAB1231770 HPV High Risk Screen with HPV Genotype Reflex
LAB1230885 Chlamydia+Gonococcus PCR

LAB1230886 Chlamydia PCR
LAB1230887 Gonococcus PCR
LAB1230888 Trichomonas PCR

- ✓ Aseptic Control PAP Test Lubricating Jelly (ITM-1140484) and Surgilube® (ITM-1092842) are the only lubricating jellies to be used with ThinPrep®
- ✓ *Testing cannot be added onto a previous completed Pap Test Order. Note STI Panel and Mgen are not available for ThinPrep® Collection



**BD ESwab®
Regular Swab**
ITM-1148589 (white)
Minitip Flex Swab
ITM-1066011 (blue)

LAB233 Anaerobic Culture
LAB240 Fungal Culture
LAB3615 Gram Stain for BV/Yeast
LAB3417 Group B Strep, PCR
LAB3527 Group B Strep, Pen Allergy

LAB234 MRSA Screen Culture
LAB1231036 Respiratory Culture
LAB3488 Group A Strep, Culture
LAB3691 Trichomonas Antigen
LAB2111191 Wound Culture w/gram stain



**UTM®
Regular Swab**
ITM-1186125
Minitip Swab
ITM-1140078

LAB9520 Bordetella pertussis, PCR
LAB1230607 COVID-19 PCR
LAB1230746 COVID-19, Flu A&B, RSV PCR
LAB3255 Flu A/B PCR

LAB9170 HSV PCR for Lesions
LAB9440 Mycoplasma/Ureaplasma Culture
LAB1230844 VZV PCR



24-Hour Urine Jugs**

Orange:
ITM-1066912
White:
ITM-1065967

White is for room temp specimens like Uric Acid.



Sterile Containers**

ITM-1072848

- *Body Fluid
- *Sputum
- *Stool (unpreserved)
- *Fresh Tissue
- *Urine



Stool Kit 3 Containers **

ITM-1114530

Cary-Blair | SAF | Empty
Always check container label! Do not go by color!
Fill all 3 containers.



APTIMA®**

Unisex Swab Kit ITM-1065957 (white)
Multitest Kit ITM-1150249 (orange)
Urine ITM-1068485 (yellow)

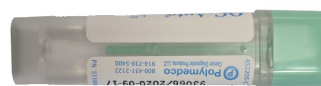
- ✓ Patients less than 14 years old must be collected using the APTIMA® collection device. This testing will be sent out to a reference laboratory.
- ✓ Order Reference Miscellaneous testing and indicate test name in the order comment.
- ✓ Include source and specimen type.



Urine Tubes**

Yellow UA Urine Tube ITM-1065946
Urine C&S Kit Gray ITM-1066841

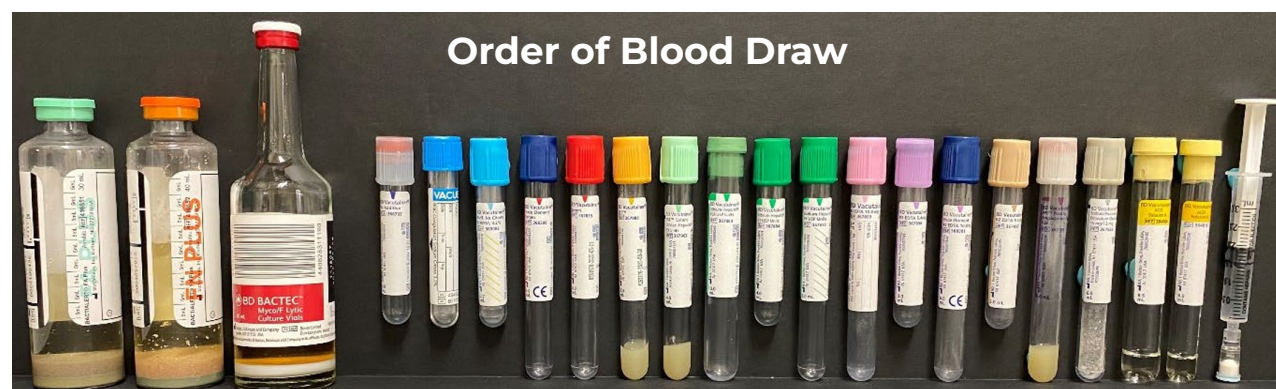
For UA with culture: Send 1 or 2 yellow tubes and 1 gray.



Occult Blood CRC Testing Vial**

polymedco FIT Kit
OC-Auto® FIT ITM-1159158

Label must be filled out completely with patient name, date of birth and collection date of and time before mailing.



Order of Blood Draw

- ✓ Always review the lab test catalog** for important test collection information, including minimum volume, number of times the tube needs to be inverted after collection, if tube needs to be centrifuged/spun or left whole blood, specimen integrity times, and another collection and handling instructions.



Labeling

- ✓ Every specimen must be labeled with patient's legal full name and date of birth.
- ✓ Label should also include specimen type, date and time of collection, and source if needed.
- ✓ Do not place labels on the lid or bottom of the container, or stick labels to each other.
- ✓ Do not cover up patient info or barcodes on the labels.
- ✓ Do not cover up "windows" on tubes and leave colored edge of vacutainer visible.
- ✓ See lab catalog for more information on labeling.**

- ✓ Always use **2 Patient Identifiers** (full legal name and date of birth) on the specimen label and on the order.
- ✓ Always make sure that lids to containers, tubes and vials are on correctly and tight! Leaky specimens will be rejected.

GENERAL TEST LISTING, NOT ALL TESTS ARE LISTED**

****Review Lab Test Catalog: corewellhealth.testcatalog.org**